

APPLICATION NUMBER: 23/01125/FUL

DESCRIPTION: Erection of part one - part two storey class C3b residential development of 12 no 1bed units, staff area, communal lounges with associated landscaping and car parking.

ADDRESS: The Hollies, Spring Street, Hollingworth, Tameside SK14 8NQ

Image 1: Aerial Photograph

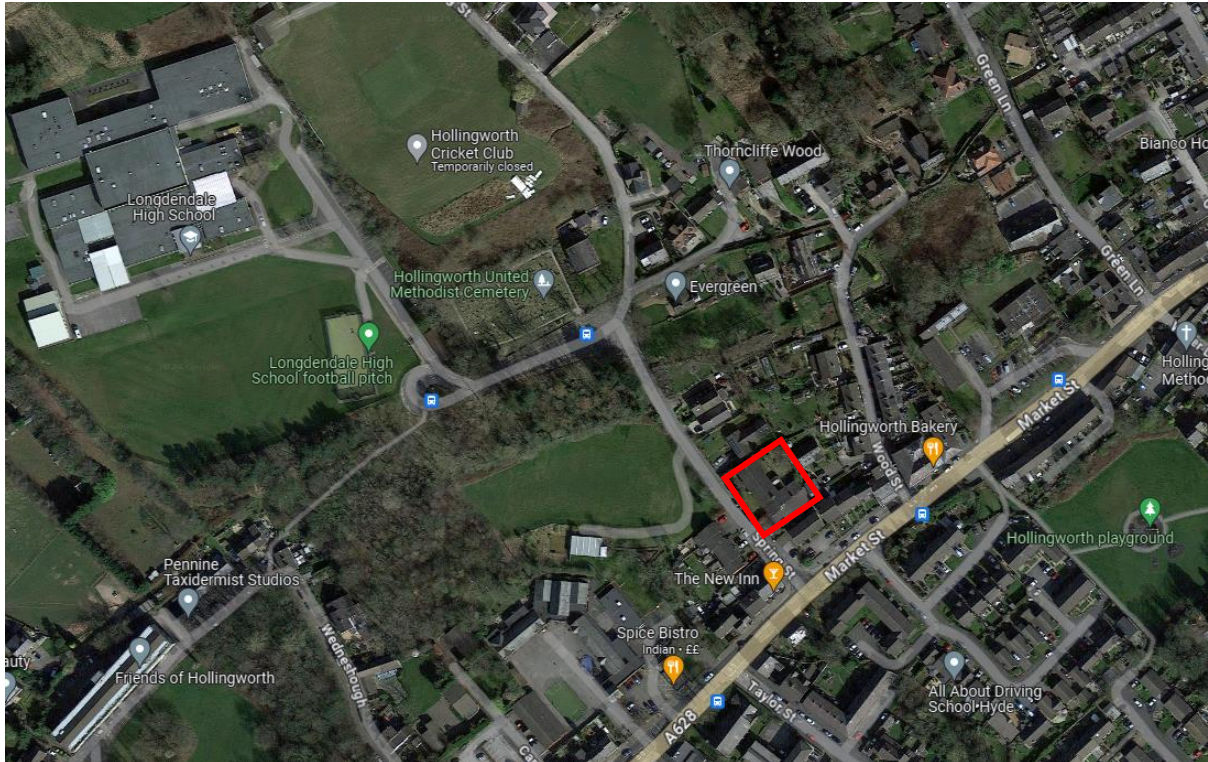


Photo 2: Street scene as viewed from Spring Street with Spring Court Mews to the right (south east)



Image 3: Photo of No.5 Spring Street adjacent to The Hollies on the right.



Image 4: view of Spring Court Mews from existing hardstanding area to south of plot



Image 5: view looking east across Spring Street with The Hollies to the left and Spring Court Mews to the right



Image 6: Existing gable end of The Hollies facing Spring Court Mews



Image 7: Rear elevation of The Hollies



Image 8: Existing Landscaped area with tree to be removed.



Image 9: side elevation of No.5 Spring Street which overlooks the communal garden of The Hollies



Image 10: Houses opposite on Spring Street

